



wesal
VIEWS

WELCOME TO WESAL

WESAL IS AN OPEN GATE FOR NEW STORIES

Wesal is a fully-integrated city in the heart of East Cairo that connects you with whom you love. It is a new book for you to fill with new stories and memories.



A Tale Between Two Cities

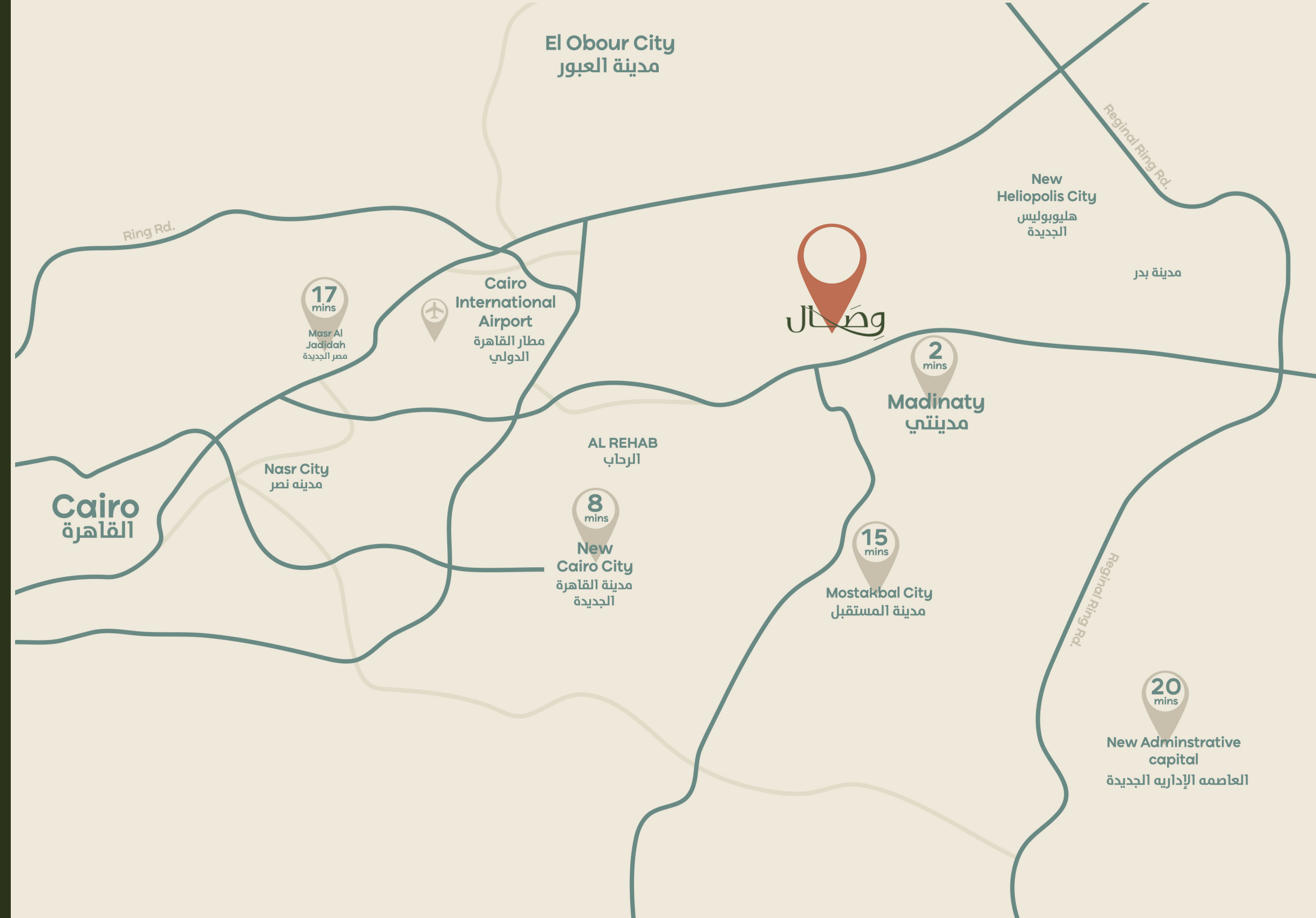
**WESAL IS A FULLY INTEGRATED CITY IN THE HEART OF EAST CAIRO
MINUTES AWAY FROM EVERYTHING AROUND YOU.**

Wesal is a ready to live city in the heart of East Cairo on an area more than 800 acres. It has two main compounds with an immersive commercial spine in that connects them with 6 different gates.



Our Location

The name Wesal stands for the connection between two gated compounds centred by an impressive commercial spine amidst a mixed-use city, as it also showcases its connectivity to other vibrant cities and locations. This amounts to highlight the City's motto of maintaining the fine Link between people as well as elevating the life of its homeowners.



The Great Masterplan

Spanning over more than 800 acres, Wesal is a ready to live in city that consists of two main compounds with an immersive commercial spine that connects the whole city together. With 6 gates for ease of access in and out of the city, there are many facilities on offer such as cinemas, office spaces, food courts, open gardens, shopping centres, spacious houses of worship, a medical center, and entertainment venues.



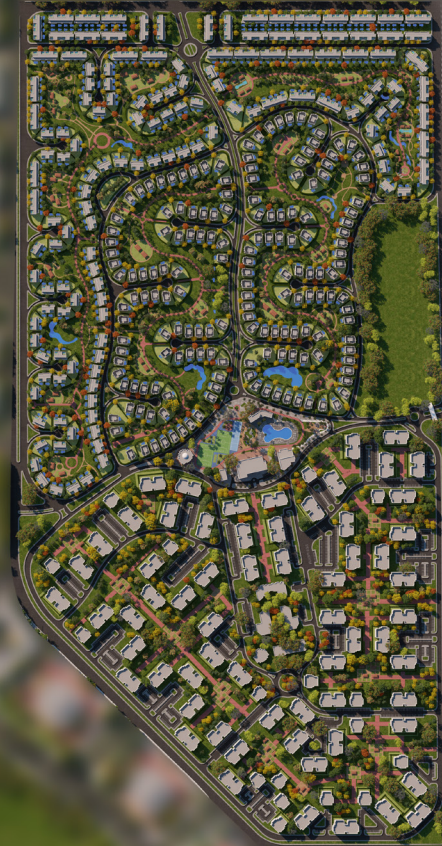
wesal VIEWS

Wesal Views is the city's first gated compound. It offers an enticing product mix of Standalone Villas, Twin Houses, Town Houses, Duplexes and Apartments, along with a wide range of in-house facilities ranging from clinics and sport clubs to houses of worship.



Wesal Views Masterplan

Wesal Views is located on the East side of the commercial spine. Easily accessible with 3 gates, wide streets and plenty of greenery everywhere, this compound offers its homeowners the tranquil convenient life they desire. It offers its residents a cosy modern lifestyle while being surrounded with all their needs and only minutes away from their loved ones all over Cairo's East side.



Amenities & Facilities



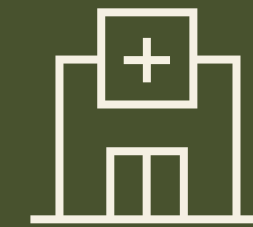
Sports club



Worship Areas



Commercial area



Clinics



Parking Areas



Nursery



Commercial Spine Facilities

- 

Food Courts
- 

Cinemas
- 

Office Spaces
- 

Shopping Center
- 

Mosque
- 

Church
- 

Outdoor Cafes & Restaurants
- 

Hotel Studios & Apartments

UNIT TYPES





STANDALONE VILLA

STANDALONE VILLA

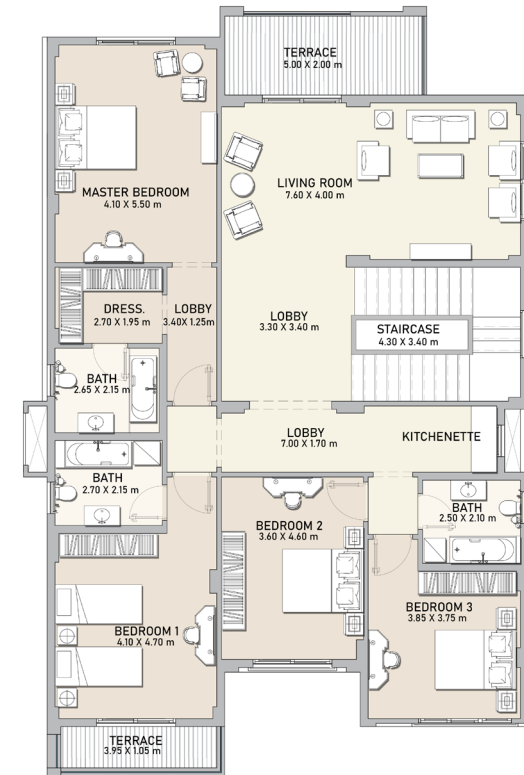
GROUND FLOOR



Total area	510.50 m ²
Total Ground Floor area	218.60 m ²

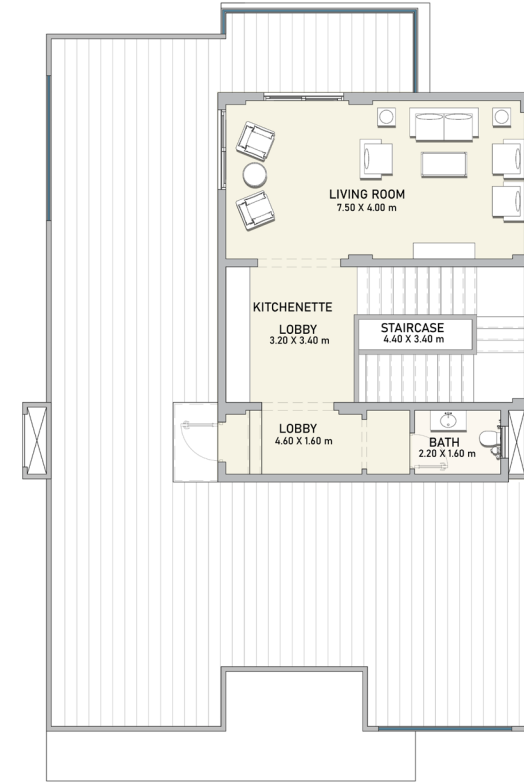
All renders and visual materials are for illustrative purpose only. Actual areas may vary from the stated figures. All dimensions are measured to structural elements.

1ST FLOOR



Total First Floor area | 213.5 m²

ROOF



Total Roof area | 78.4 m²

All renders and visual materials are for illustrative purpose only. Actual areas may vary from the stated figures. All dimensions are measured to structural elements.



TWINHOUSE

TWINHOUSE

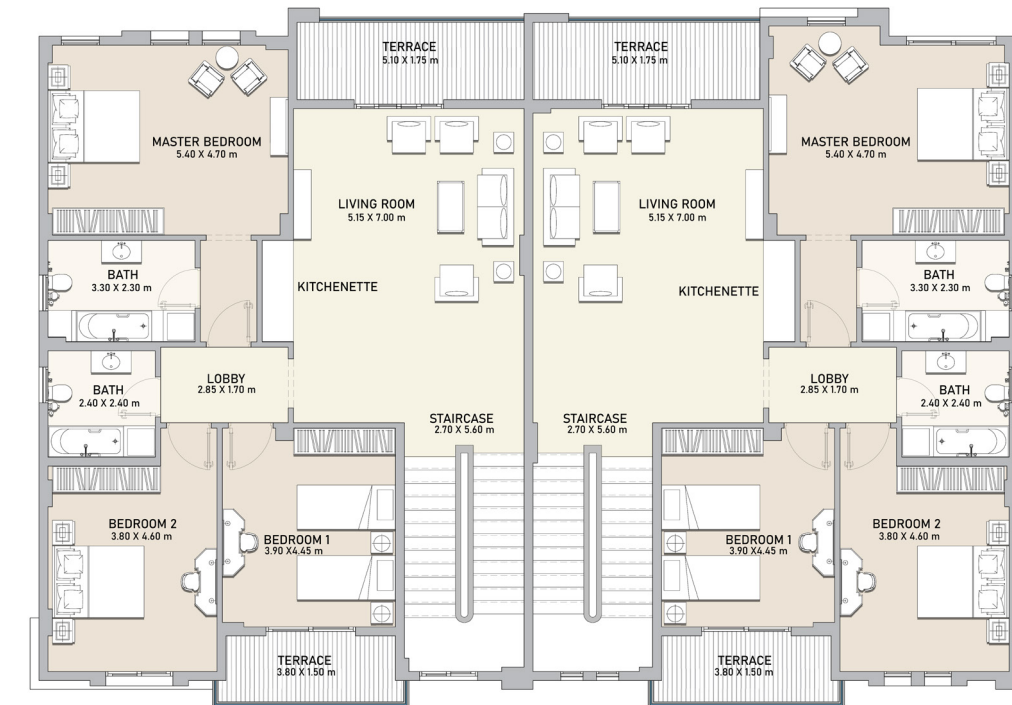
GROUND FLOOR



Total area	400 m ²
Total Ground Floor area	166 m ²

All renders and visual materials are for illustrative purpose only. Actual areas may vary from the stated figures. All dimensions are measured to structural elements.

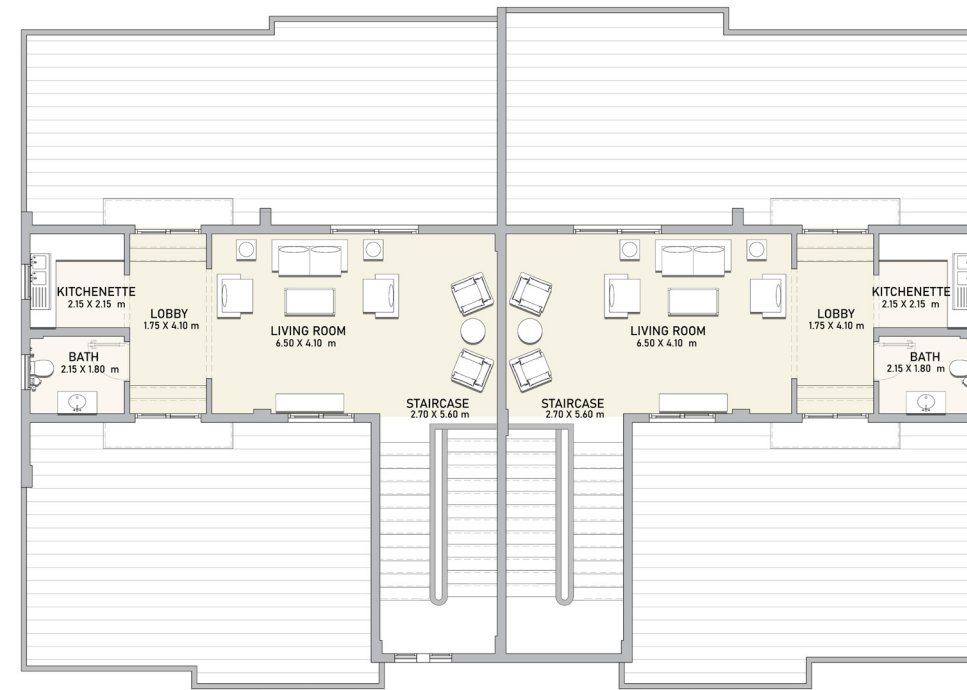
1ST FLOOR



Total First Floor area	164 m ²
------------------------	--------------------

All renders and visual materials are for illustrative purpose only. Actual areas may vary from the stated figures. All dimensions are measured to structural elements.

ROOF



Total Roof area

70 m²

All renders and visual materials are for illustrative purpose only. Actual areas may vary from the stated figures. All dimensions are measured to structural elements.



TOWNHOUSE

TOWNHOUSE

GROUND FLOOR



Corner Units

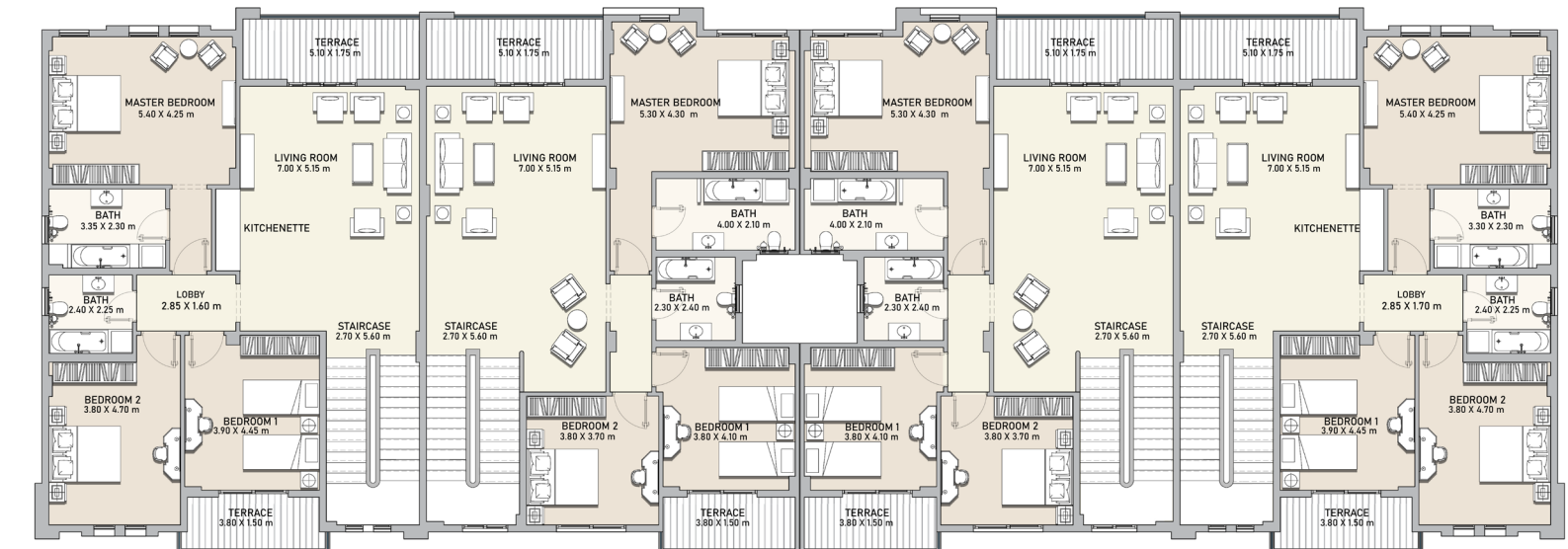
Total area	404 m ²
Total Ground Floor area	166 m ²

Middle Units

Total area	394 m ²
Total Ground Floor area	157 m ²

All renders and visual materials are for illustrative purpose only. Actual areas may vary from the stated figures. All dimensions are measured to structural elements.

1ST FLOOR



Corner Units

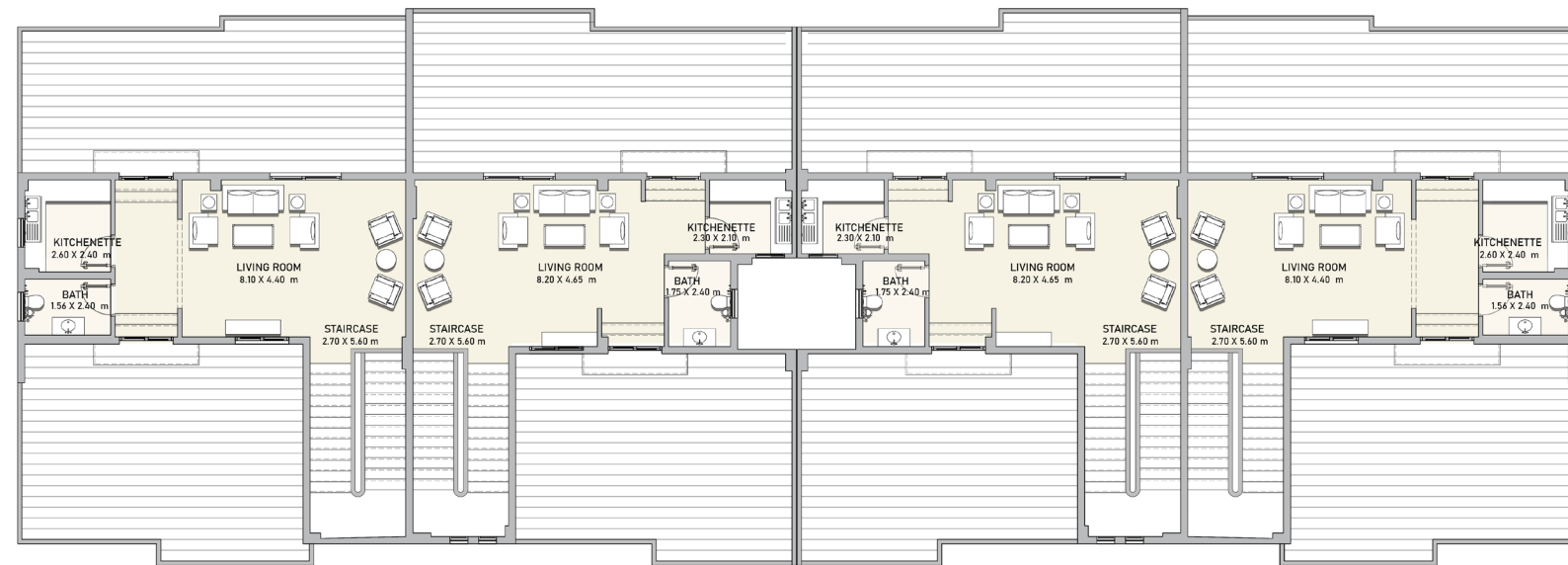
Total First Floor area	164 m ²
------------------------	--------------------

Middle Units

Total First Floor area	162 m ²
------------------------	--------------------

All renders and visual materials are for illustrative purpose only. Actual areas may vary from the stated figures. All dimensions are measured to structural elements.

ROOF



Corner Units

Total Roof area

74 m²

Middle Units

Total Roof area

75 m²

All renders and visual materials are for illustrative purpose only. Actual areas may vary from the stated figures. All dimensions are measured to structural elements.



APARTMENTS

DUPLEX (SINGLE)

BASEMENT

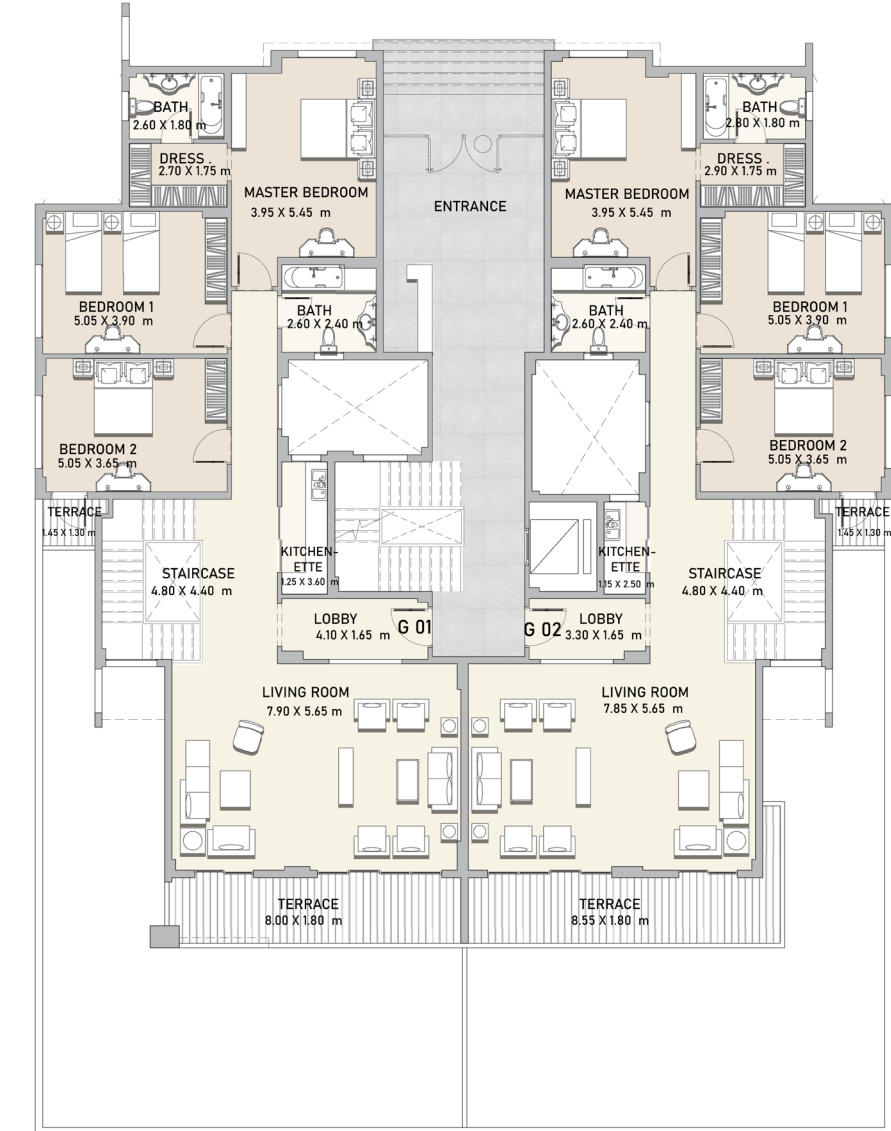
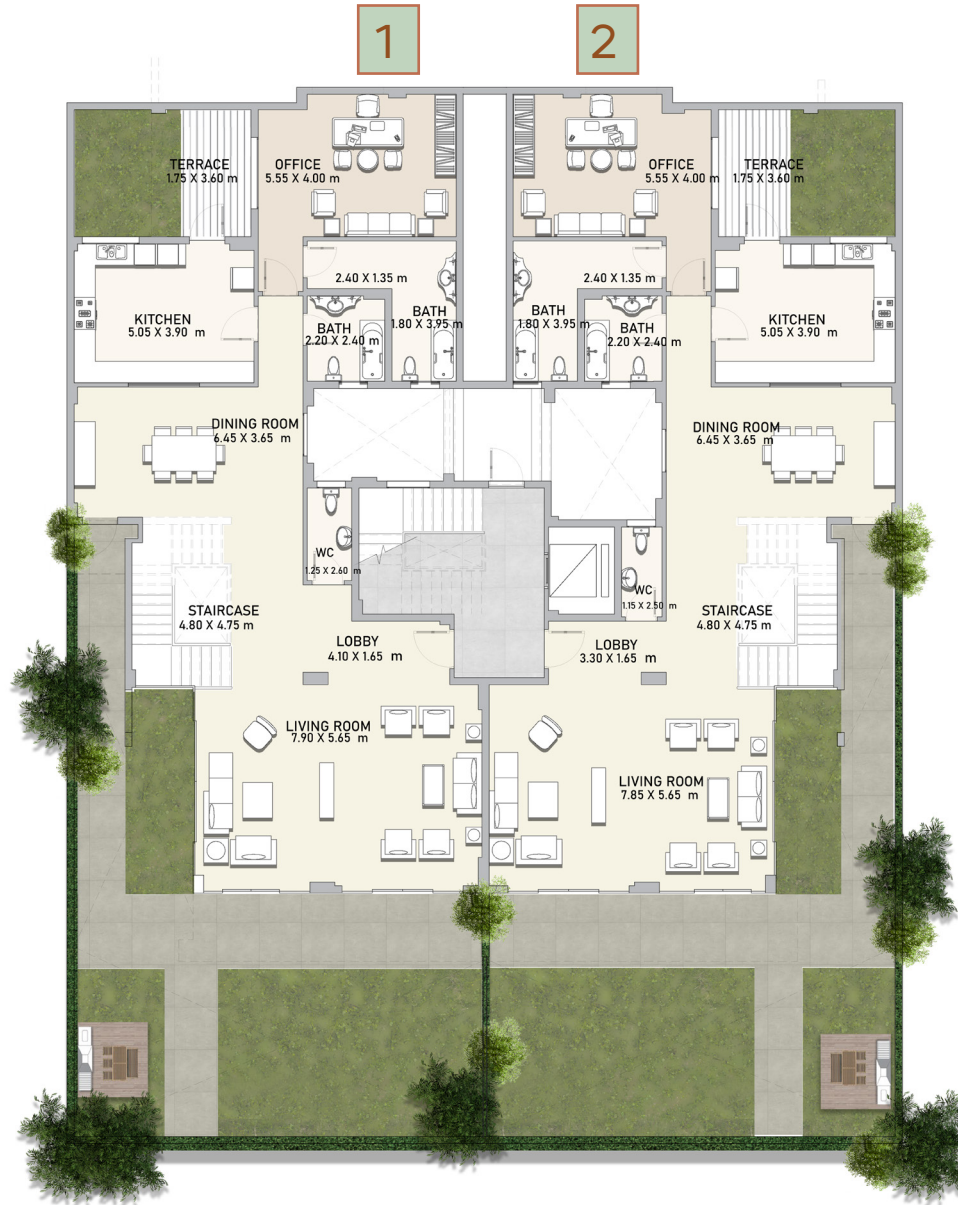
GROUND FLOOR

Duplex 1

Total area | 442.9 m²

Duplex 2

Total area | 438.3 m²



Basement floor and ground floor together form one duplex unit.

All renders and visual materials are for illustrative purpose only. Actual areas may vary from the stated figures. All dimensions are measured to structural elements.

All renders and visual materials are for illustrative purpose only. Actual areas may vary from the stated figures. All dimensions are measured to structural elements.

1ST FLOOR

Apt. 3

Total area | 239.25 m²

Apt. 4

Total area | 247.15 m²



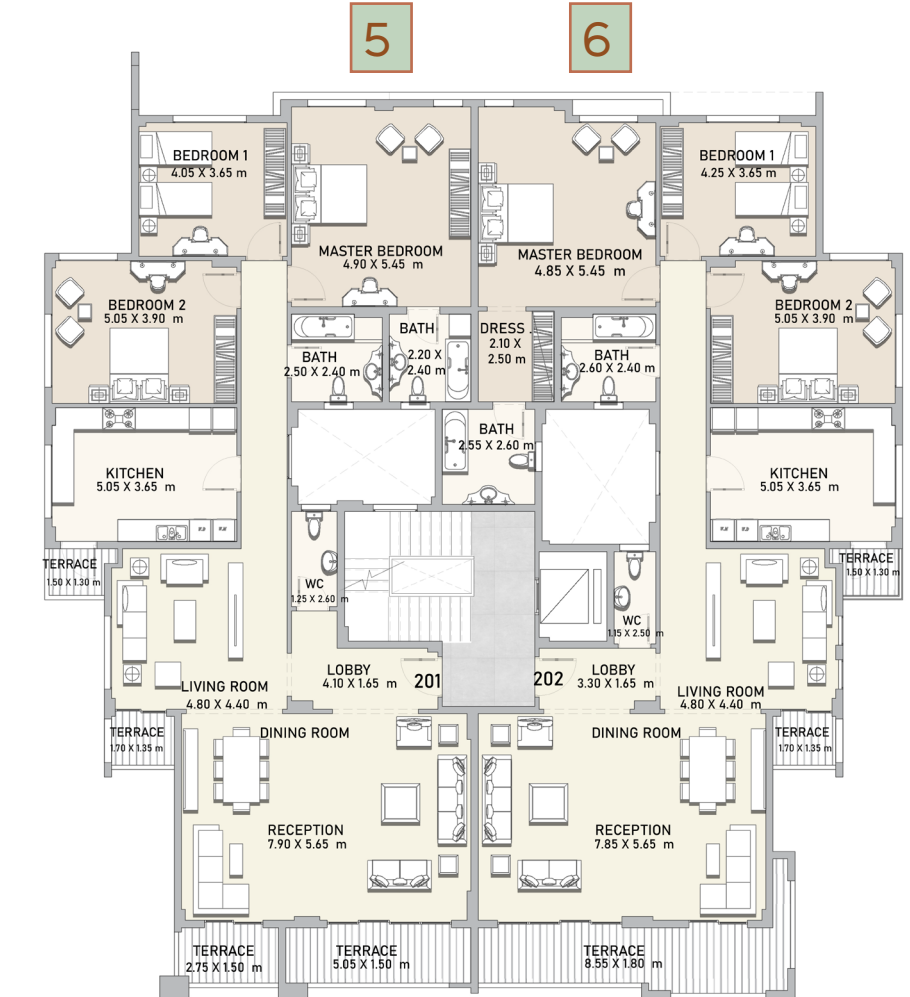
2ND FLOOR

Apt. 5

Total area | 237.85 m²

Apt. 6

Total area | 244.65 m²



DUPLEX (SINGLE)

3RD FLOOR

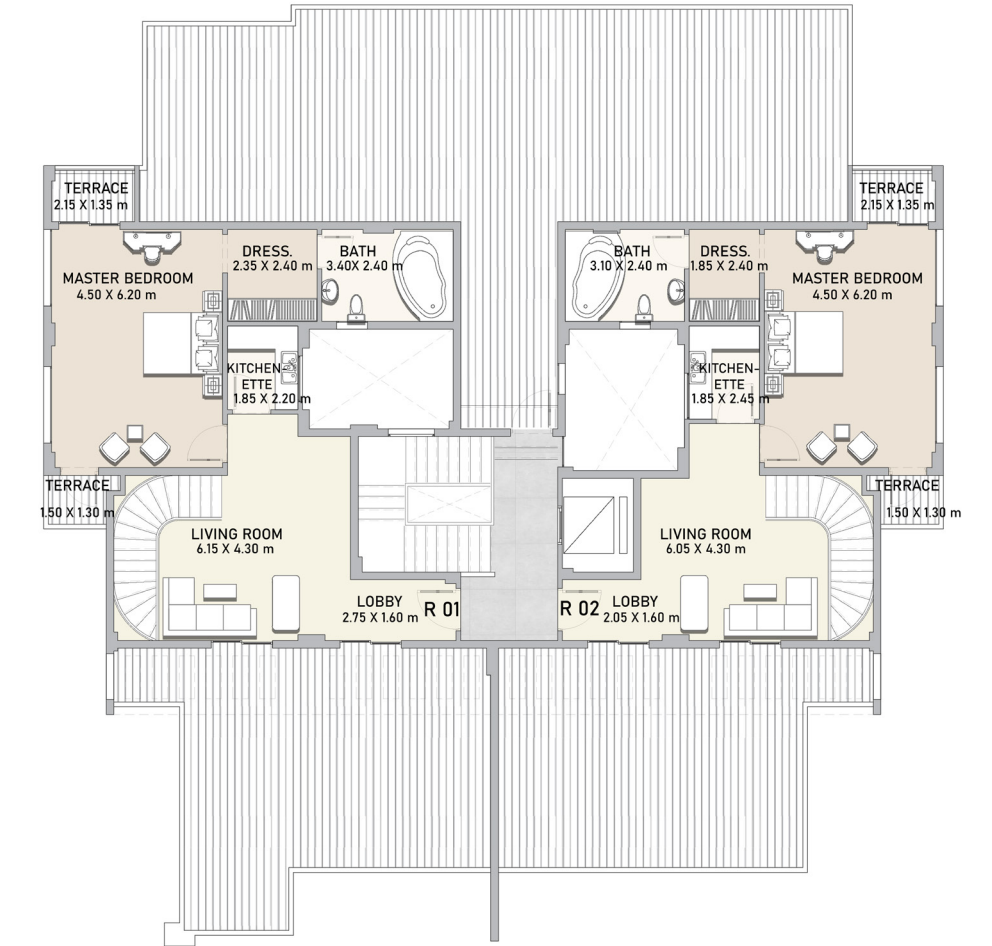
ROOF

Duplex 7

Total area | 413.4 m²

Duplex 8

Total area | 411.4 m²



3rd Floor & Roof together form one duplex unit.

All renders and visual materials are for illustrative purpose only. Actual areas may vary from the stated figures. All dimensions are measured to structural elements.

All renders and visual materials are for illustrative purpose only. Actual areas may vary from the stated figures. All dimensions are measured to structural elements.

DUPLEX (DOUBLE)

BASEMENT

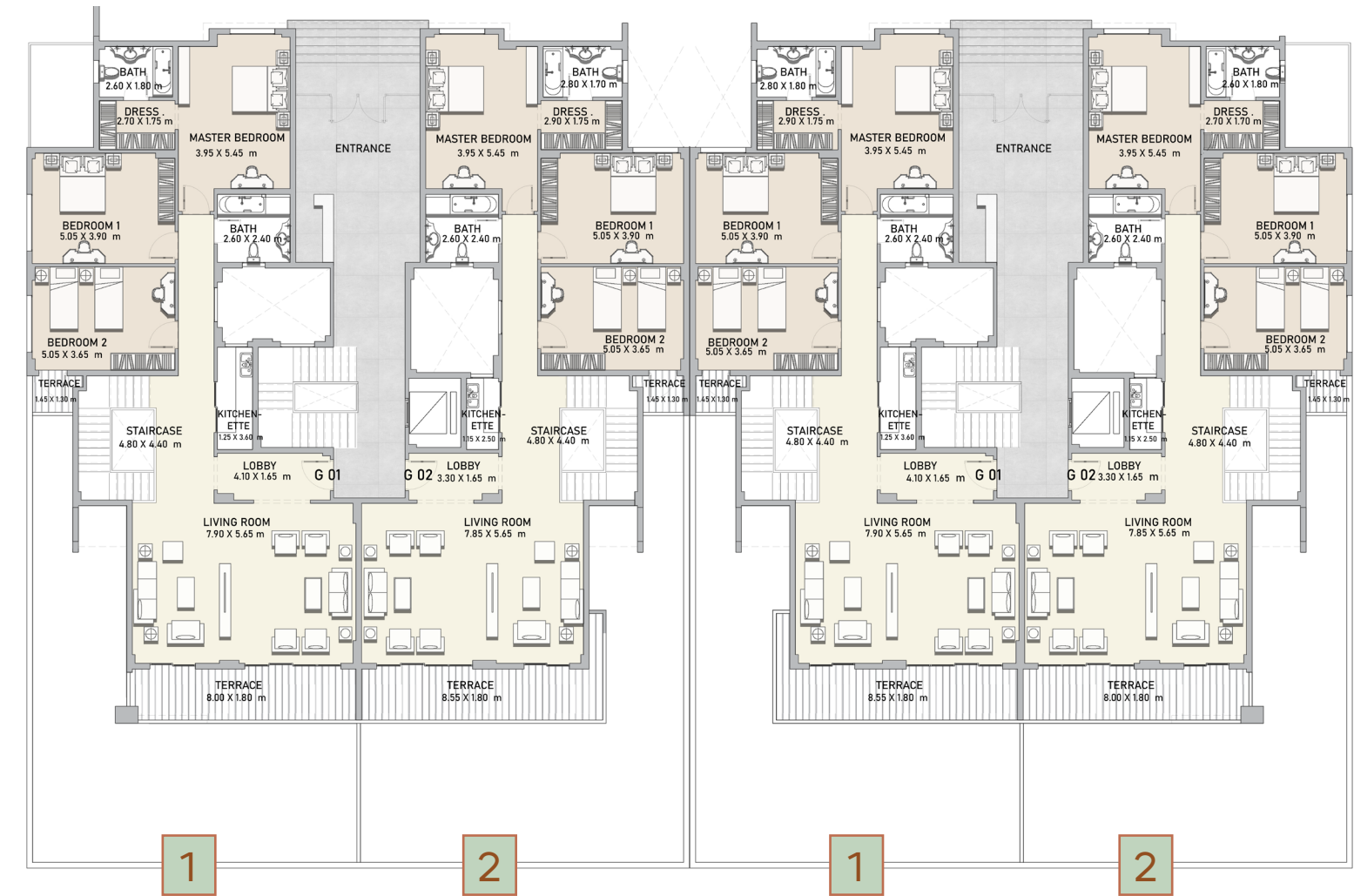


Duplex 1
Total area | **449.10 m²**

Duplex 2
Total area | **438.6 m²**

All renders and visual materials are for illustrative purpose only. Actual areas may vary from the stated figures. All dimensions are measured to structural elements.

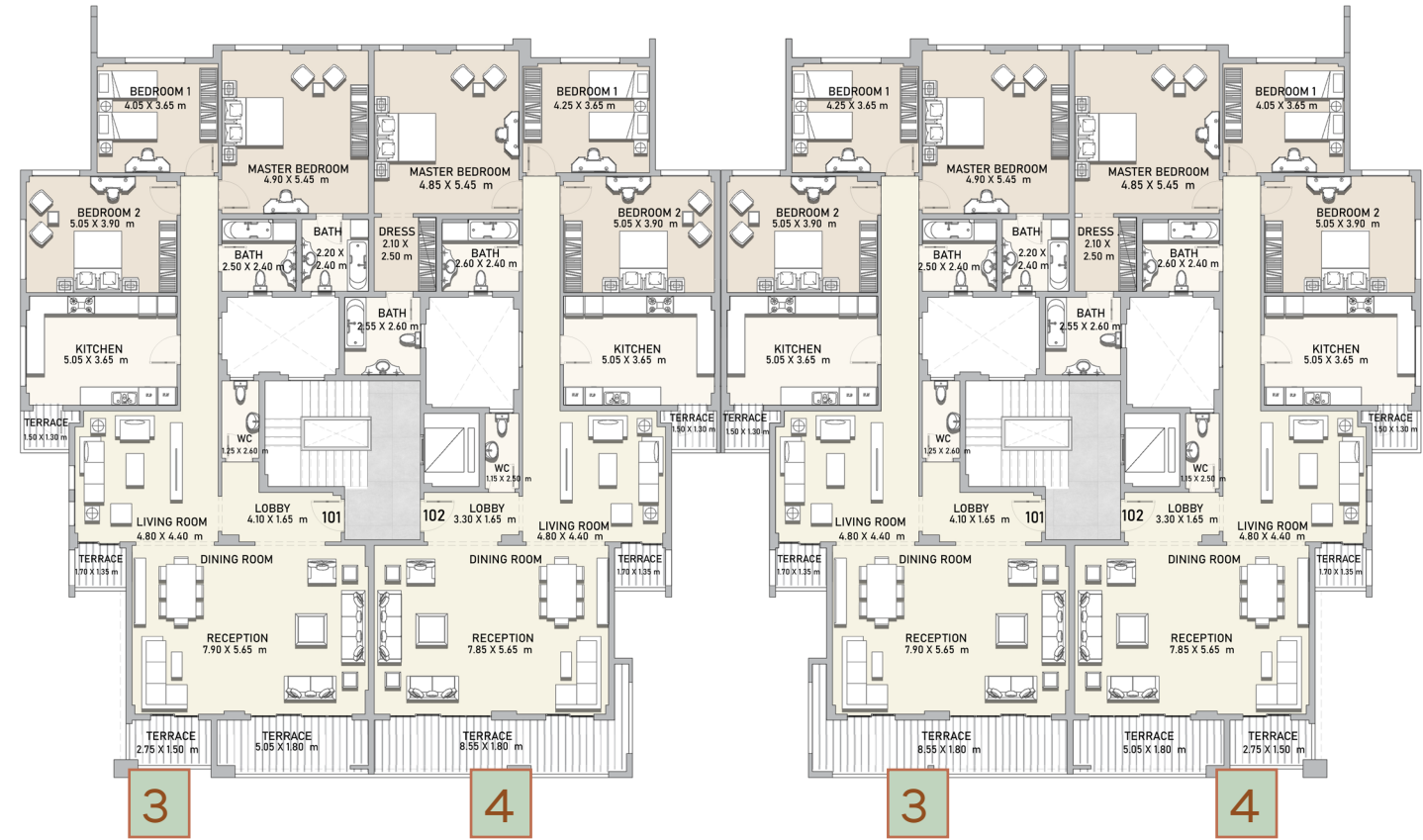
GROUND FLOOR



Basement floor and ground floor together form one duplex unit.

All renders and visual materials are for illustrative purpose only. Actual areas may vary from the stated figures. All dimensions are measured to structural elements.

1ST FLOOR



Apt. 3

Total area

244.65 m²

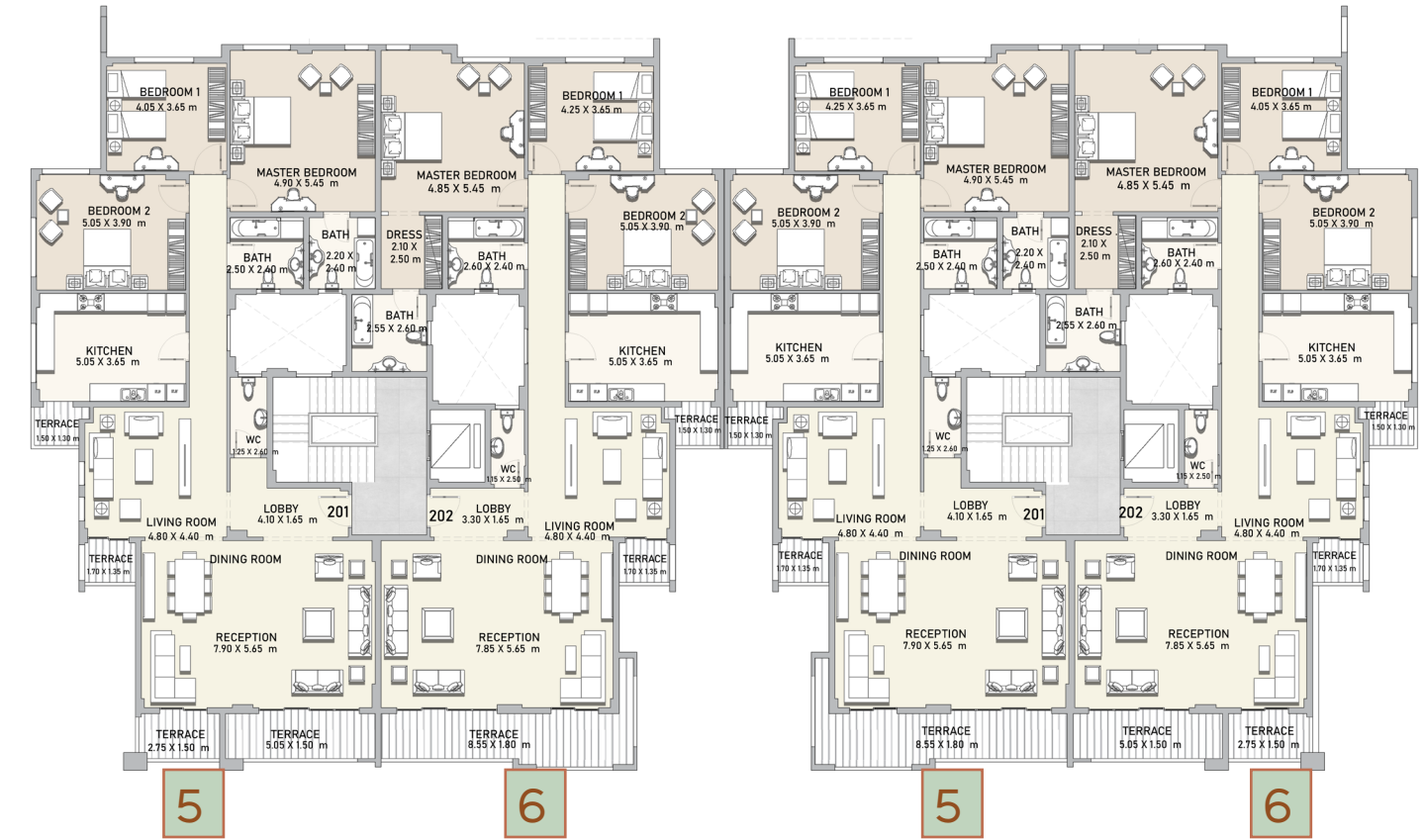
Apt. 4

Total area

245.05 m²

All renders and visual materials are for illustrative purpose only. Actual areas may vary from the stated figures. All dimensions are measured to structural elements.

2ND FLOOR



Apt. 5

Total area

242.25 m²

Apt. 6

Total area

243.75 m²

All renders and visual materials are for illustrative purpose only. Actual areas may vary from the stated figures. All dimensions are measured to structural elements.

3RD FLOOR



Apt. 7

Total area

244.25 m²

Apt. 8

Total area

243.75 m²

All renders and visual materials are for illustrative purpose only. Actual areas may vary from the stated figures. All dimensions are measured to structural elements.

ROOF



Apt. 9

Total area

201.15 m²

All renders and visual materials are for illustrative purpose only. Actual areas may vary from the stated figures. All dimensions are measured to structural elements.

BUILDING 225 TYPE 1

GROUND FLOOR



Apt. 1	
Total area	219.45 m²

Apt. 2	
Total area	216.35 m²

All renders and visual materials are for illustrative purpose only. Actual areas may vary from the stated figures. All dimensions are measured to structural elements.

1ST FLOOR



Apt. 3	
Total area	237.55 m²

Apt. 4	
Total area	243.65 m²

All renders and visual materials are for illustrative purpose only. Actual areas may vary from the stated figures. All dimensions are measured to structural elements.

2ND FLOOR



Apt. 5

Total area

239.05 m²

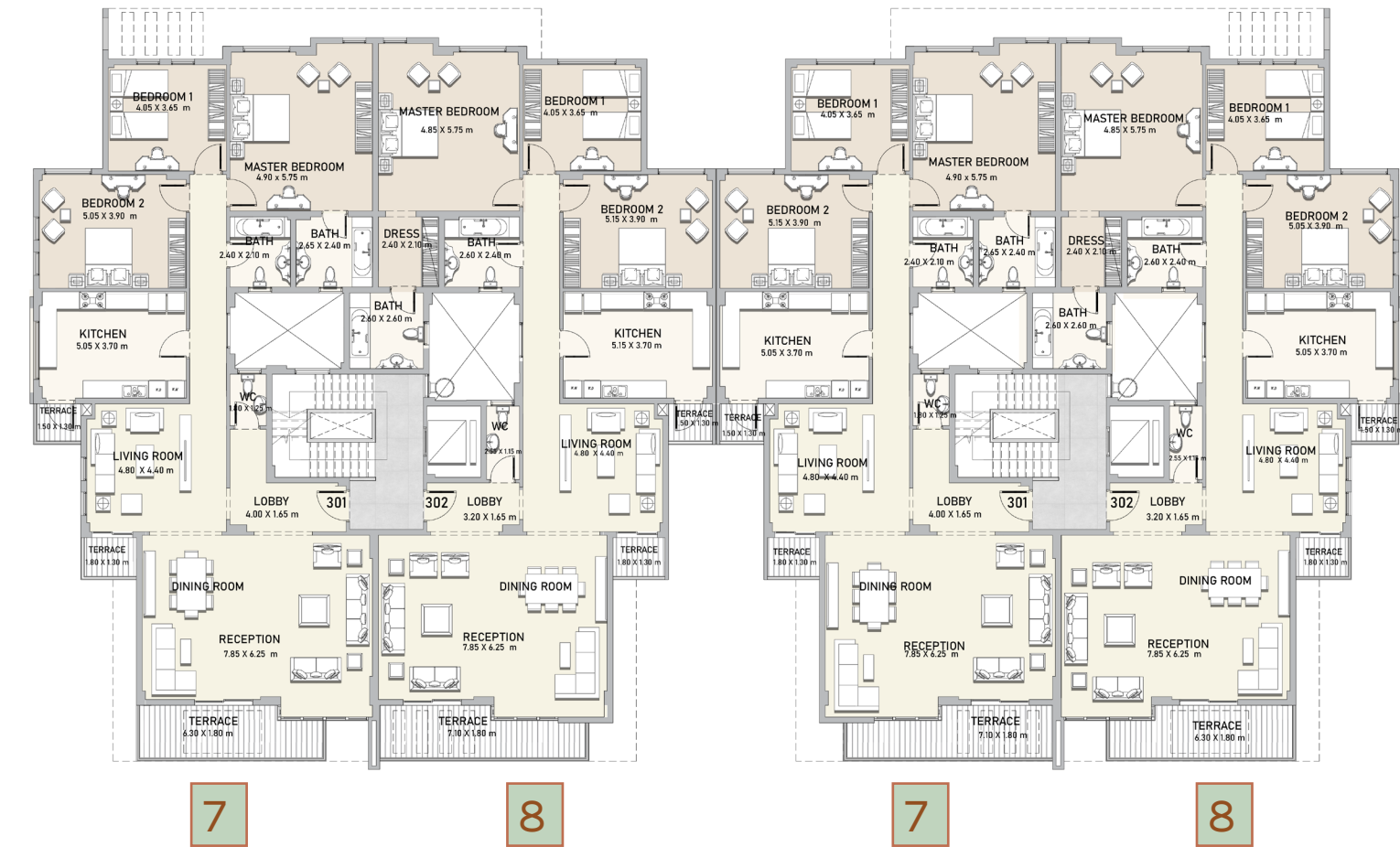
Apt. 6

Total area

243.65 m²

All renders and visual materials are for illustrative purpose only. Actual areas may vary from the stated figures. All dimensions are measured to structural elements.

3RD FLOOR



Apt. 7

Total area

240.35 m²

Apt. 8

Total area

243.65 m²

All renders and visual materials are for illustrative purpose only. Actual areas may vary from the stated figures. All dimensions are measured to structural elements.

ROOF



Apt. 9

Total area | 230.65 m²

All renders and visual materials are for illustrative purpose only. Actual areas may vary from the stated figures. All dimensions are measured to structural elements.

BUILDING 225 TYPE 2

GROUND FLOOR

Apt. 1

Total area | 217.15 m²

Apt. 2

Total area | 212.35 m²



All renders and visual materials are for illustrative purpose only. Actual areas may vary from the stated figures. All dimensions are measured to structural elements.

1ST FLOOR

Apt. 3

Total area | **234.15 m²**

Apt. 4

Total area | **241.15 m²**



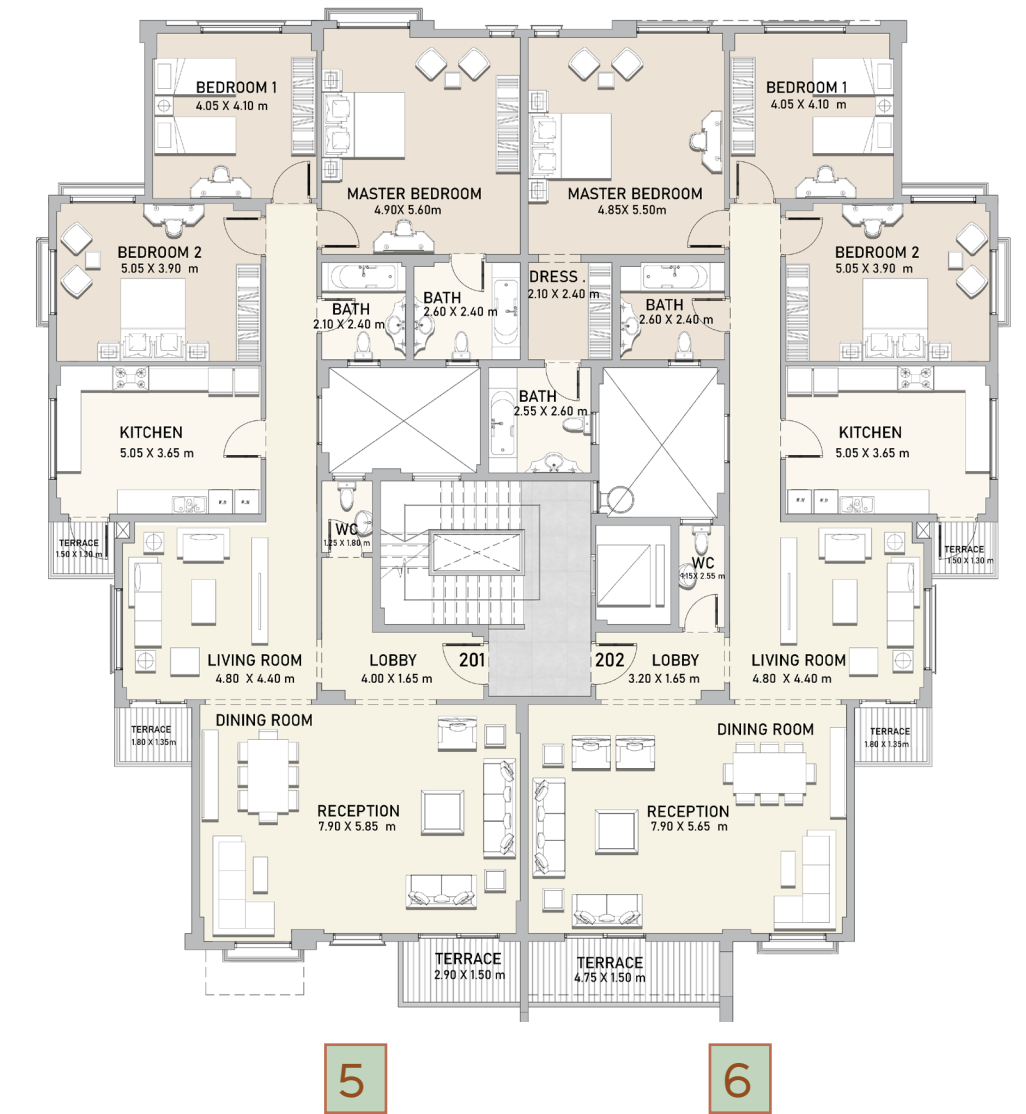
2ND FLOOR

Apt. 5

Total area | **231.95 m²**

Apt. 6

Total area | **238.85 m²**



All renders and visual materials are for illustrative purpose only. Actual areas may vary from the stated figures. All dimensions are measured to structural elements.

All renders and visual materials are for illustrative purpose only. Actual areas may vary from the stated figures. All dimensions are measured to structural elements.

DUPLEX (SINGLE)

3RD FLOOR

Duplex 7

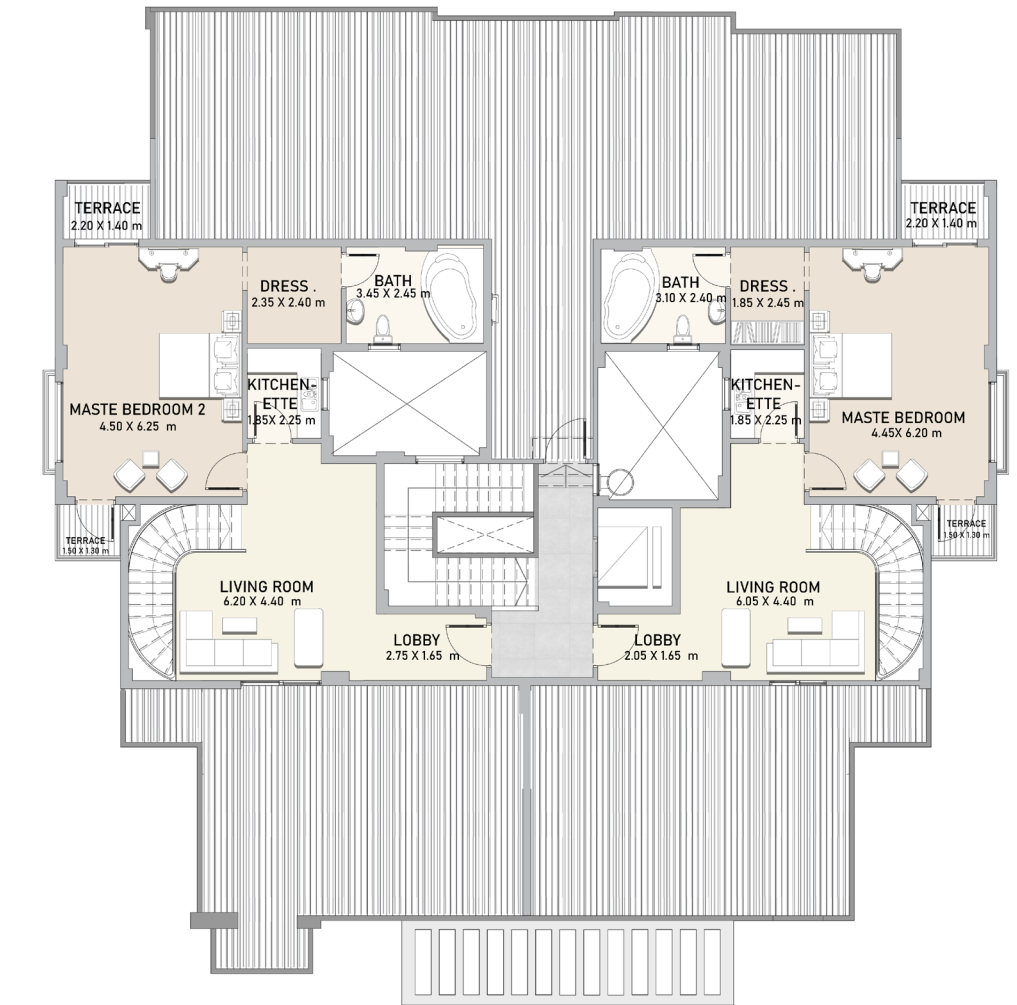
Total area | 403.5 m²

Duplex 8

Total area | 400.40 m²



ROOF



3rd Floor & Roof together form one duplex unit.

All renders and visual materials are for illustrative purpose only. Actual areas may vary from the stated figures. All dimensions are measured to structural elements.

All renders and visual materials are for illustrative purpose only. Actual areas may vary from the stated figures. All dimensions are measured to structural elements.

BUILDING 225 TYPE 2

GROUND FLOOR



Apt. 1
Total area | **219.25 m²**

Apt. 2
Total area | **214.45 m²**

All renders and visual materials are for illustrative purpose only. Actual areas may vary from the stated figures. All dimensions are measured to structural elements.

1ST FLOOR



Apt. 3
Total area | **236.25 m²**

Apt. 4
Total area | **243.25 m²**

All renders and visual materials are for illustrative purpose only. Actual areas may vary from the stated figures. All dimensions are measured to structural elements.

2ND FLOOR



Apt. 5

Total area

234.05 m²

Apt. 6

Total area

240.95 m²

All renders and visual materials are for illustrative purpose only. Actual areas may vary from the stated figures. All dimensions are measured to structural elements.

3RD FLOOR



Apt. 7

Total area

231.75 m²

Apt. 8

Total area

237.45 m²

All renders and visual materials are for illustrative purpose only. Actual areas may vary from the stated figures. All dimensions are measured to structural elements.

ROOF



Apt. 9

Total area

233.15 m²

All renders and visual materials are for illustrative purpose only. Actual areas may vary from the stated figures. All dimensions are measured to structural elements.

wesal

VIEWS

FOUNDERS



☎ 16559